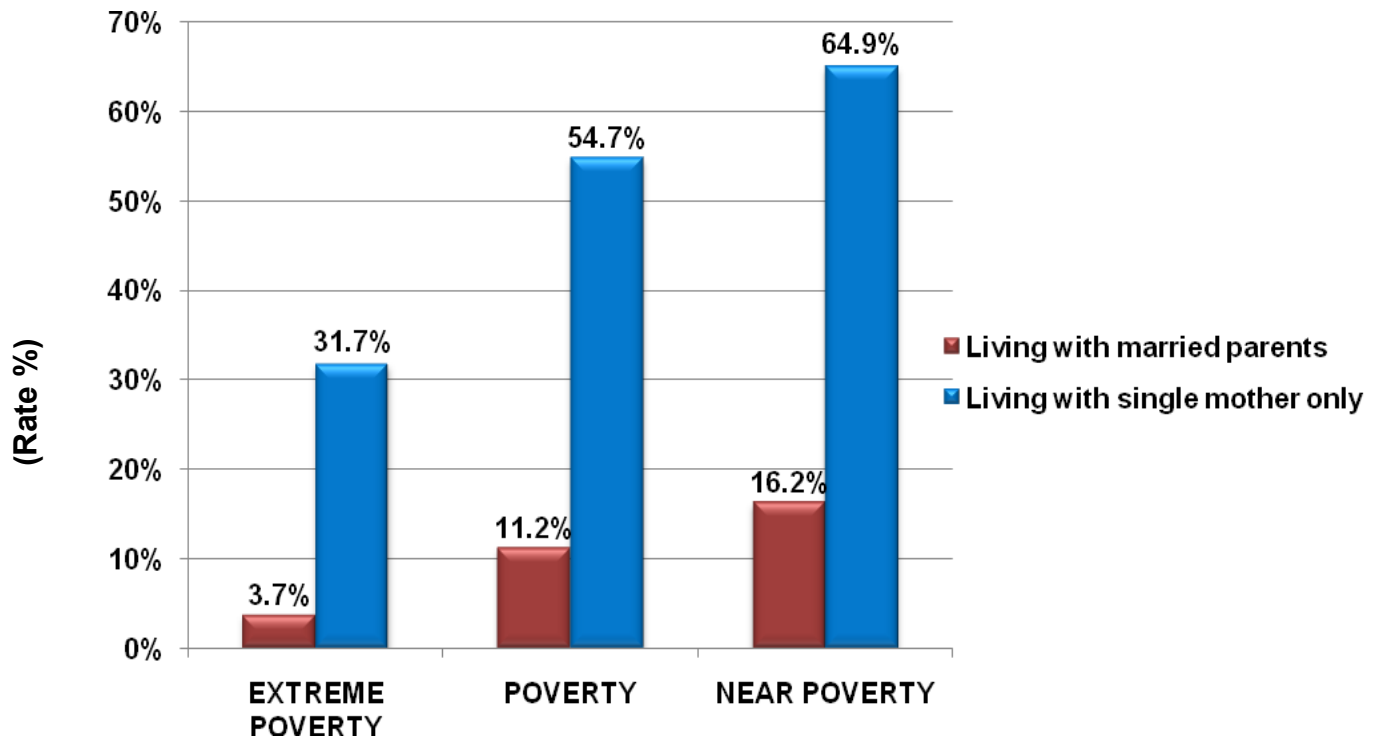


Extreme Poverty, Poverty, and Near Poverty Rates for Children Under Age 5, by Living Arrangement: 2008



Source: U.S. Census Bureau, *Current Population Survey, 2009 Annual Social and Economic Supplement*

Household Income in 20% Increments of Total: 2008

Group	Average Household Income Ranges: 2008
LOWEST 20%	\$0 – \$20,711
SECOND 20%	\$20,712 – \$38,999
THIRD 20%	\$39,000 – \$62,749
FOURTH 20%	\$62,750 – \$100,249
HIGHEST 20%	\$100,250 +
TOP 5% (part of highest 20%)	\$180,000 +

Source: U.S. Census Bureau, *Current Population Survey, 2009 Annual Social and Economic Supplement*

Breakdown of U.S. Households, by Total Money Income: 2008

Income	# of U.S. Households (in millions)	% of All U.S. Households
<\$10k	8,377	7.15%
\$10k–\$14.9k	6,847	5.84%
\$15k–\$24.9k	13,800	11.78%
\$25k–\$34.9k	12,733	10.87%
\$35k–\$49.9k	16,432	14.02%
\$50k–\$74.9k	20,977	17.90%
\$75k–\$99.9k	14,004	11.95%
\$100k–\$149.9k	14,286	12.19%
\$150k–\$199.9k	5,250	4.48%
\$200k +	4,477	3.82%

Source: U.S. Census Bureau, *Current Population Survey, 2009 Annual Social and Economic Supplement*.

Estimated median household income: \$52,029

Source: U. S. Census Bureau, *2008 American Community Survey*

Number and Percentage of Children in Poverty, by Race: 2008

	NUMBER OF CHILDREN IN POVERTY	PERCENTAGE OF CHILDREN IN POVERTY
ALL RACES	14,068,000	19.0%
WHITE	8,863,000	15.8%
AFRICAN-AMERICAN	3,878,000	34.7%
HISPANIC *	5,010,000	30.6%
ASIAN-AMERICAN	446,000	14.6%
NATIVE AMERICAN **	194,272	31.9%

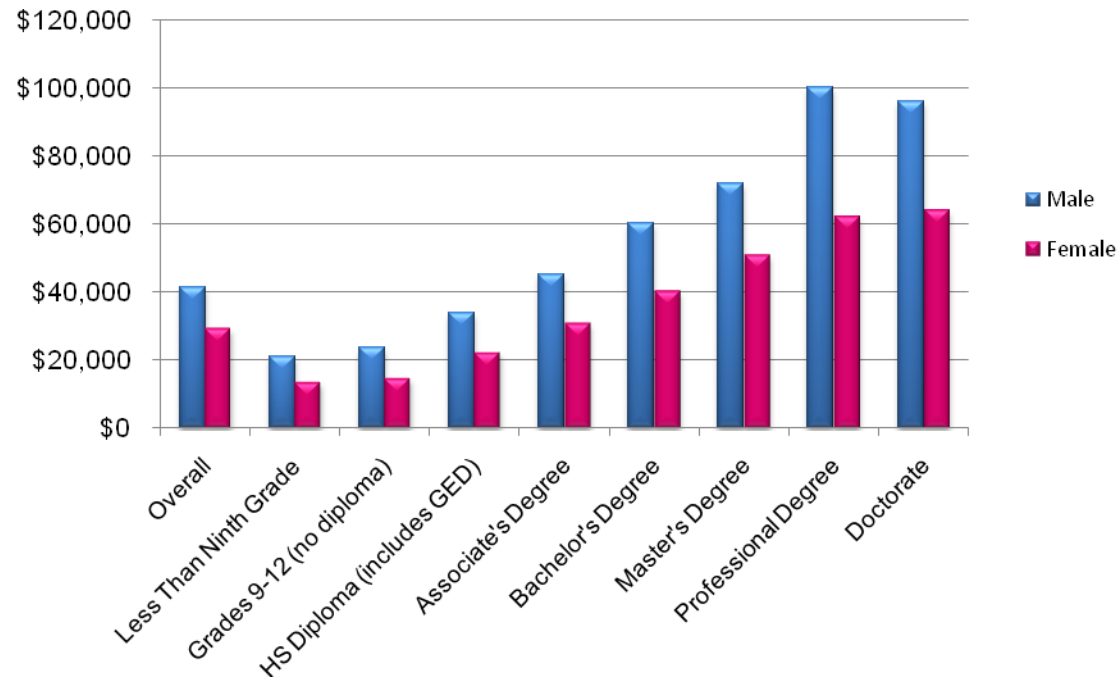
* Hispanics may be of any race

** Data from 2000 census

Source: U.S. Census Bureau, *Current Population Survey, 2009 Annual Social and Economic Supplement*.

U.S. Median Income for Persons Age 25 and Older, by Sex and Educational Attainment: 2008

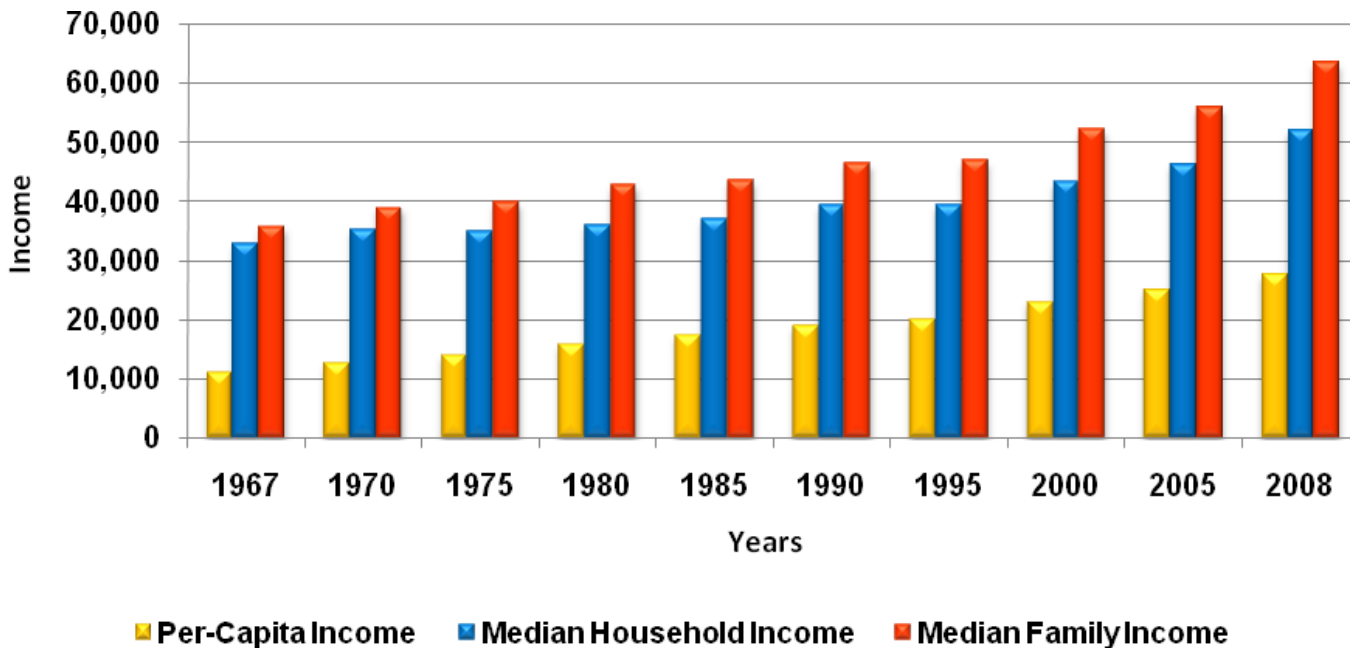
	Overall	Less Than Ninth Grade	Grades 9-12 (no diploma)	HS Diploma (includes GED)	Associate's Degree	Bachelor's Degree	Master's Degree	Professional Degree	Doctorate
Numbers of persons with earnings (in thousands)									
Male	72,297	2,989	4,826	21,712	6,325	15,150	5,819	1,684	1,347
Female	63,598	1,578	2,972	17,382	7,569	14,529	6,242	1,017	786
Median earnings, in 2008 dollars									
Male	\$41,398	\$20,969	\$23,831	\$33,936	\$45,077	\$60,294	\$71,878	\$100,000	\$95,877
Female	\$29,273	\$13,588	\$14,707	\$22,298	\$30,865	\$40,225	\$50,835	\$62,118	\$64,081



Source: U.S. Census Bureau, *Current Population Survey, 2009 Annual Social and Economic Supplement*.

U.S. Per-Capita Income, Median Household Income, and Median Family Income: 1967 to 2008

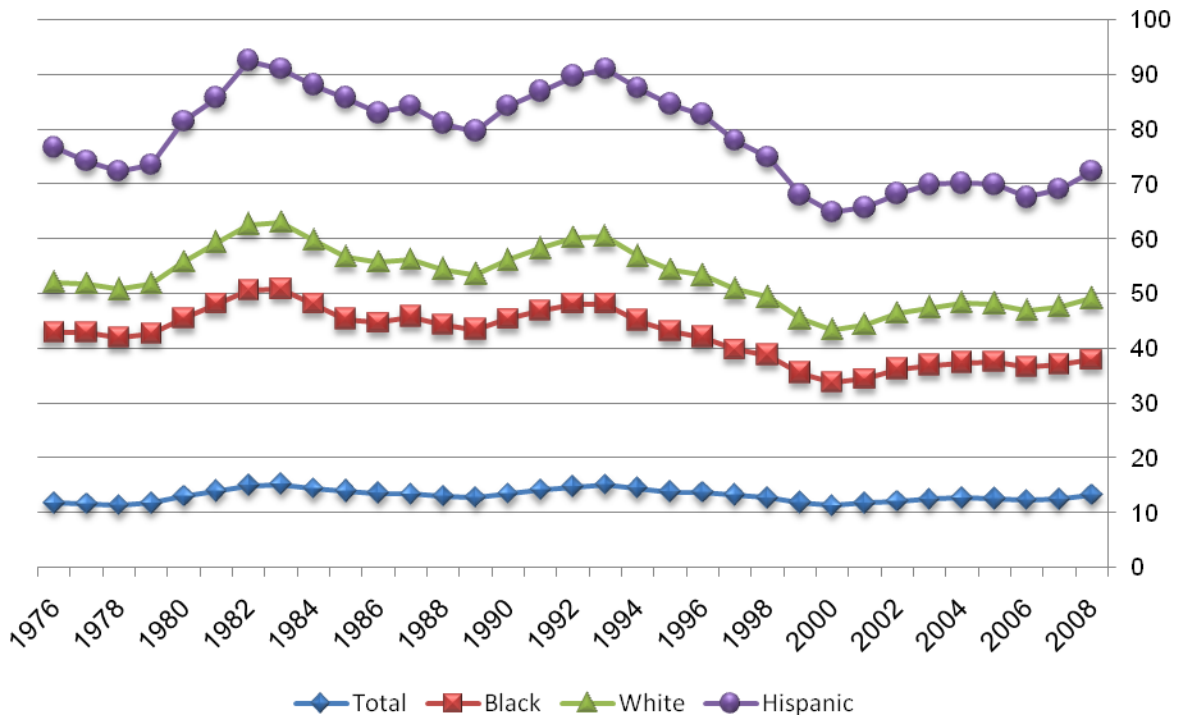
Year	Per-Capita Income	Median Household Income	Median Family Income
2008	27,589	52,029	63,366
2005	25,035	46,242	55,832
2000	22,970	43,162	52,148
1995	19,871	39,306	46,843
1990	18,894	39,324	46,429
1985	17,280	37,059	43,518
1980	15,844	36,035	42,776
1975	13,972	34,980	39,784
1970	12,543	35,232	38,954
1967	11,067	32,783	35,629



Source: U. S. Census Bureau, 2008 American Community Survey 1-Year Estimates

Percentage of U.S. Person Below Poverty Level, by Race and Ethnicity: 1976 to 2008

Year	All Races	Black	White	Hispanic	Year	All Races	Black	White	Hispanic
2008	13.2	24.7	11.2	23.2	1991	14.2	32.7	11.3	28.7
2007	12.5	24.5	10.5	21.5	1990	13.5	31.9	10.7	28.1
2006	12.3	24.3	10.3	20.6	1989	12.8	30.7	10.0	26.2
2005	12.6	24.9	10.6	21.8	1988	13.0	31.3	10.1	26.7
2004	12.7	24.7	10.8	21.9	1987	13.4	32.4	10.4	28.0
2003	12.5	24.4	10.5	22.5	1986	13.6	31.1	11.0	27.3
2002	12.1	24.1	10.2	21.8	1985	14.0	31.3	11.4	29.0
2001	11.7	22.7	9.9	21.4	1984	14.4	33.8	11.5	28.4
2000	11.3	22.5	9.5	21.5	1983	15.2	35.7	12.1	28.0
1999	11.9	23.6	9.8	22.7	1982	15.0	35.6	12.0	29.9
1998	12.7	26.1	10.5	25.6	1981	14.0	34.2	11.1	26.5
1997	13.3	26.5	11.0	27.1	1980	13.0	32.5	10.2	25.7
1996	13.7	28.4	11.2	29.4	1979	11.7	31.0	9.0	21.8
1995	13.8	29.3	11.2	30.3	1978	11.4	30.6	8.7	21.6
1994	14.5	30.6	11.7	30.7	1977	11.6	31.3	8.9	22.4
1993	15.1	33.1	12.2	30.6	1976	11.8	31.1	9.1	24.7
1992	14.8	33.4	11.9	29.6					



Source: U.S. Census Bureau, *Current Population Survey, 2009 Annual Social and Economic Supplement*.