

You're receiving this email because of your relationship with San Juan Safe Communities, Inc.. Please [confirm](#) your continued interest in receiving email from us.

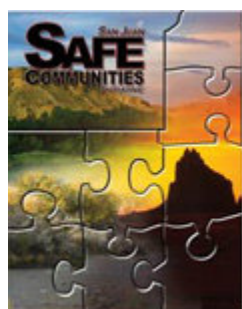
You may [unsubscribe](#) if you no longer wish to receive our emails.

Safe Communities Connection

www.sjsci.org

Volume 1, July 2008

www.umattr.com



**Bringing the pieces
together for a safer
community**



San Juan Safe Communities, Inc. Newsletter

In This Issue

Prevention Update

Suppression Update

Intervention Update

Juvenile Corner

Street Gangs

Grant Information

Housing

Community Calendar

Quick Links

MethResources.gov

[The Meth Project](#)

[MAPP-SD](#)

[Center for Nonprofit Excellence](#)

[Most of Us](#)

[Parents. The Anti-Drug](#)

[NIDA](#)

[SADD](#)

[Partnership For A Drug Free](#)

[America](#)

UmattR.com

Greetings!

San Juan Safe Communities is pleased to share with you our new e-newsletter. We feel that this newsletter can be helpful to you by keeping everyone current on local initiatives and projects. We would like our newsletter to include information from your organization. We are hopeful that you will want to use this newsletter to share info on upcoming events, recognize your success in the community, and promote the work of your organization. Our plan is to produce a new e-newsletter each month.

Sincerely,

Dr. Henderson, President
Board of Directors
San Juan Safe Communities
100 West Broadway
Farmington, NM 87401
www.sjsci.org

Prevention Update

Energy drinks may put teenagers at risk

New York Times May 26, 2008 Study shows that Energy Drink Consumption May Lead to Increased Risky Behavior Recent research suggests that teens and young adults who consume energy drinks may be at greater risk of a number of high-risk behaviors, that include alcohol use, other drug problems, risky sex and violence, the 'New York Times' reported May



26.



[Read More](#)



Project Venture/ Farmington Municipal Schools

Project Venture is an evidence-based prevention model that was developed by Mac Hall through the Native Indian Youth Leadership Project. This program has been replicated throughout the US including Alaska and Hawaii. The program was designed to focus on Native American Youth; however, the benefits of the program are seen cross-culturally.



[Read More](#)



Community Center Development

Our first Community Center, located at Sycamore Park in the south part of Farmington is due to open early in September of this year. The City of Farmington, Parks and Recreation will be responsible for the staff, building scheduling and maintenance, as well as the park complex once it is open. The City will also be overseeing the recreation, after school, senior and similar programming, while safe communities is busily scrambling to bring additional neighborhood-based projects into the center. When the doors open, we are hoping to have programs in place that area residents of all ages can take advantage of and benefit from.



We have developed relationships with the Farmington Municipal Schools, San Juan College, the Farmington Police Department, the San Juan County Sheriff's Office, San Juan Regional Medical Center, the Red Cross, Big Brother's Big Sister's, the Boy's and Girl's Club to bring in their existing programs which they currently offer. I want to thank San Juan Regional Community Reinvestment Board for their generous financial support to Safe Communities, so we will be able to bring in many of these programs.

In addition to the programs being brought in by our partners, we are excited about the prospect of developing and implementing some needed, but non-existent projects such as high-risk mentoring for youth who have been in trouble or adults in need of role models.

Also planned for inclusion are practical community-based opportunities in areas such as income tax preparation, family budgeting, understanding credit and how to repair it, job interview techniques, citizenship classes, assistance with social security and DAV issues, to name just a few of the possibilities.

The Safe Communities Evaluation team will be carefully monitoring which programs appear to be working over the course of the next year. Those deemed to have been a success will be

offered to other centers around the county as they come on line.

If you have questions, input, or would just like to know more, please give our office a call at 505-599-1490, or leave us an email at dandarnell@msn.com.

Supression Update

NIDA InfoFacts:

High School and Youth Trends (National Institute on Drug Abuse)

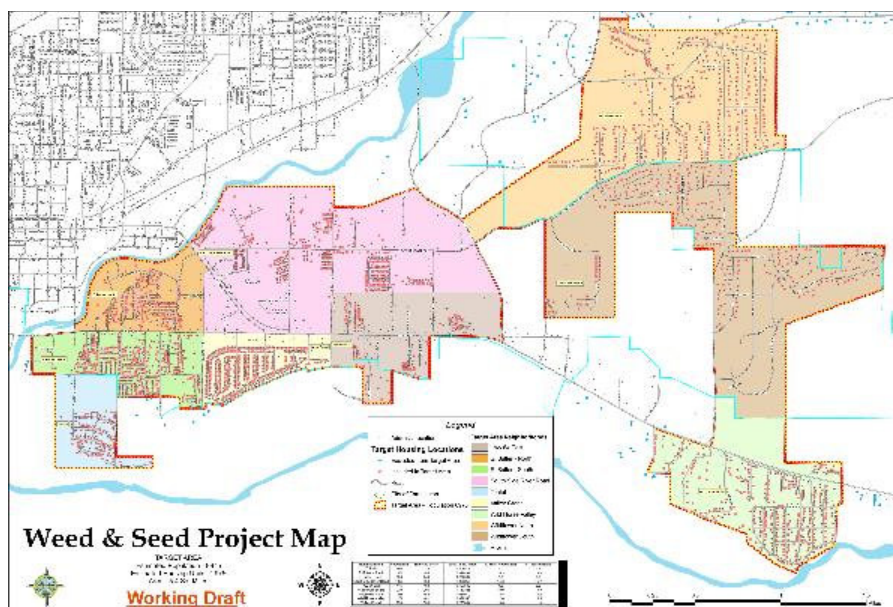
Since 1975, the Monitoring the Future (MTF) survey has been administered annually to study the extent of and beliefs about drug use among 12th-graders. The survey was expanded in 1991 to include 8th- and 10th-graders. It is funded by NIDA and is conducted by the University of Michigan's Institute for Social Research. The goal of the survey is to collect data on past month, past year, and lifetime (1) drug use among students in these grade levels. The 33rd annual study was conducted during 2007.(2)

[Read More](#)



Weed & Seed Grant

Just to let everyone know, Safe Communities, in conjunction with the San Juan County Sheriff's Office and the Farmington Police Department will be submitting an application for a "Weed and Seed" project this September. The proposed site is located in both the city and the county, in the southern part of the Farmington. It was selected based upon the population and the crime trends.



For those who are not familiar with what this program is, it is a federal grant program designed to be used in a targeted, high crime, typically lower socio-economic area. The "Weed" portion confronts the bad elements in a community, and attempts to remove them. The "Seed" part consists of projects designed to add value back to the community.

Intervention Update

Meth Pilot Project

The methamphetamine pilot project concept was introduced to the Governor in January of 2006 by a bi-partisan group of local legislators, county elected officials, and County staff. The plan was to develop a pilot methamphetamine treatment strategy based on the significant success of the San Juan County DWI Detention, Treatment, & Aftercare Program.



The methamphetamine pilot project processed the first group of clients into the program on November 1, 2006. A special orientation event was held in Judge John Dean's courtroom .

The Alternative Sentencing Division oversees the DWI Center, the Methamphetamine Pilot Project, and the Adult Misdemeanor Compliance Program.

The methamphetamine pilot project shares a secure, minimum-security jail campus with the current San Juan County 28-Day DWI program. Making every effort to assure a safe and secure environment for all program participants, the same basic rules exist for both the meth clients and the DWI clients.

Treatment programming and dorm housing remain separate, although co-located; the DWI and meth clients are together only for meals and religious services.

The daily, Monday through Friday, schedule consists of exercise and group sessions in the morning, followed by lunch. In the afternoon there are additional group sessions or educational units.

The meth pilot project employs the same empirically-supported treatment strategy and protocols in use by the DWI program; researchers from the University of New Mexico Center on Alcohol, Substance Abuse, and Addictions (UNM-CASAA) are interested in a thorough evaluation of the program.

The methamphetamine pilot project provides 60 days of gender appropriate jail-based substance abuse treatment, preceded and followed by intensive case management. About a year of aftercare services follow the initial inpatient program. Treatment services are provided by Presbyterian Medical Services and Totah Behavioral Health Authority during the Intensive Outpatient and Aftercare phases. Recovery is a life-long commitment.

The treatment strategy, sensitive to the engagement level and ability of the clients, includes individual & group therapy, life skills, substance abuse & health education, 12-Step programs, etc.

Experienced Licensed Alcohol and Drug Abuse Counselors (LADACs) and case managers provide direct services. Administrative and supervisory functions are provided by Alternative

Sentencing Division / DWI Center staff.

The total treatment investment is more than a full year; the investment in recovery is a lifetime.

For more info contact Rob Mitchell at rmitchell@sjcounty.net

American Indian Anti-Meth Campaign

The Office of National Drug Control Policy has partnered with two other Federal agencies, Health and Human Services (HHS) and the Department of Interior's Bureau of Indian Affairs (BIA) - along with the Partnership for Drug-Free America (PDFA) and the National Congress of American Indians (NCAI) - to launch the first ever anti-meth public service campaign targeted towards the American Indian and Native Alaskan populations.

[Read More](#)

MethResources.gov

Drug Endangered Children Program to be Implemented on Lac Courte Oreilles Reservation

[Read More](#)

Juvenile Corner

Juvenile Justice Services

CYFD's Juvenile Justice Services division (JJS) serves troubled youth and their families through transition services, community corrections and probation and parole services, reintegration facilities and secure facilities. Each year the Department serves about 15,000 youth through probation and parole (field) services, about 235 in secure facilities, and about 28 in reintegration facilities. On an average day the Department has about 4,500 clients under its supervision.



[Read More](#)

Street Gangs

The Juvenile Probation and Parole Office and the San Juan County Sheriff's Department with the support of local law enforcement agencies has developed and facilitates a Gang Awareness Class. This class has been open to JPPO clients, their parents and any other families referred through the schools. We have also been open to community attendance as we feel that this is a community problem and awareness is the first line of defense! Our next Gang Awareness Class is August 2, 2008, at San Juan College and we have 55 youth attending with their parents. We will be scheduling a class in September if you are interested in attending call Heather Faverino or Krista Lawrence at 325-1631.

Heather Faverino

Grant Information

Funding Connection

This section links to the San Juan Safe Communities Web site to give you current information on grants that are available to a variety of organizations. Go to www.sjsoci.org and click on Grant Connections.

Housing



Housing Program

The Affordable Housing Alliance has the attention of Tom Udall's office regarding requested legislation for acquisition of BLM land for affordable housing. Letters have been submitted requesting support to acquire parcels for development of housing.

ECHO continues to work with the City of Aztec on an application for a special use permit to increase the number of units on lots on Bunker Street in Aztec. We hope to have a final decision in July. We will begin interviewing families who might pre-qualify for these townhomes. We will seek families making 80% or below the area median income of \$49,800 (for a family of four).

San Juan County has stepped forward to sponsor the CDBG Planning Grant to fund the strategic housing plan. They will also follow up with the needed RFP for this project. This will establish the plan required by the Mortgage Finance Authority to bring HUD funding as well as our funding sources to San Juan County.

ECHO applied for funds for the homebuyer education and counseling program through an MFA grant. We are hopeful of receiving this funding for a much needed service. Besides group classes we will offer one on one financial counseling to prepare families for home ownership as well as foreclosure prevention counseling.

The New Mexico Foundation for Building included San Juan County in their housing rehabilitation application to MFA. Funds were awarded for the rehab program and ECHO will work with FFB to train intake personnel for that program. Brad Hill of FFB will speak at the AHA meeting on July 30th.

The next first time homebuyer class will be from 9-4 on July 19th. Flyer attached.
The Affordable Housing Alliance will meet on July 30th, 3-5pm in Room 127 of the Family Resource Center.

Rosalyn Fry, Housing Director
ECHO, Inc.
505-325-7466 office
505-330-3248 cell

Community Calendar

And Upcoming Events

7/19/08 Homebuyers Class
8/10/08 SJSCI Quarterly & Board Meeting @ Civic Center 8:30am
8/24/08 HIDTA Southwest Meth Initiative in Tuscon , Arizona

Workplace Drug Use Awareness Presentation

Recently Safe Communities has been called upon to develop a presentation geared toward helping managers deal with drug use in their workplace. The request was specific to methamphetamine, but other substance abuse is also covered. We have given this presentation to our members, PESCO, and to the American Society of Safety Engineers (A.S.S.E.). The typical presentation is approximately an hour, with time for questions. It seems perfect for most safety meetings.

If you are interested in having our staff present to your managers, please give us a call at 505-599-1490, or email us at dandarnell@msn.com

Join Our Mailing List!

San Juan Safe Communities Initiative.
100 W. Broadway Farmington, New Mexico 87401
505-599-1491 www.sjsci.org





[Forward email](#)

✉ [SafeUnsubscribe®](#)

This email was sent to dandarnell@msn.com by dandarnell@msn.com.
[Update Profile/Email Address](#) | Instant removal with [SafeUnsubscribe™](#) | [Privacy Policy](#).

Email Marketing by



San Juan Safe Communities, Inc. | 100 W. Broadway | Farmington | NM | 87401